

Knockanarragh Wind Farm

Q1 2024

■ Thank you for your engagement

Understanding the local area, its people, environment and history form a core part of how we approach the design and development of renewable energy projects.

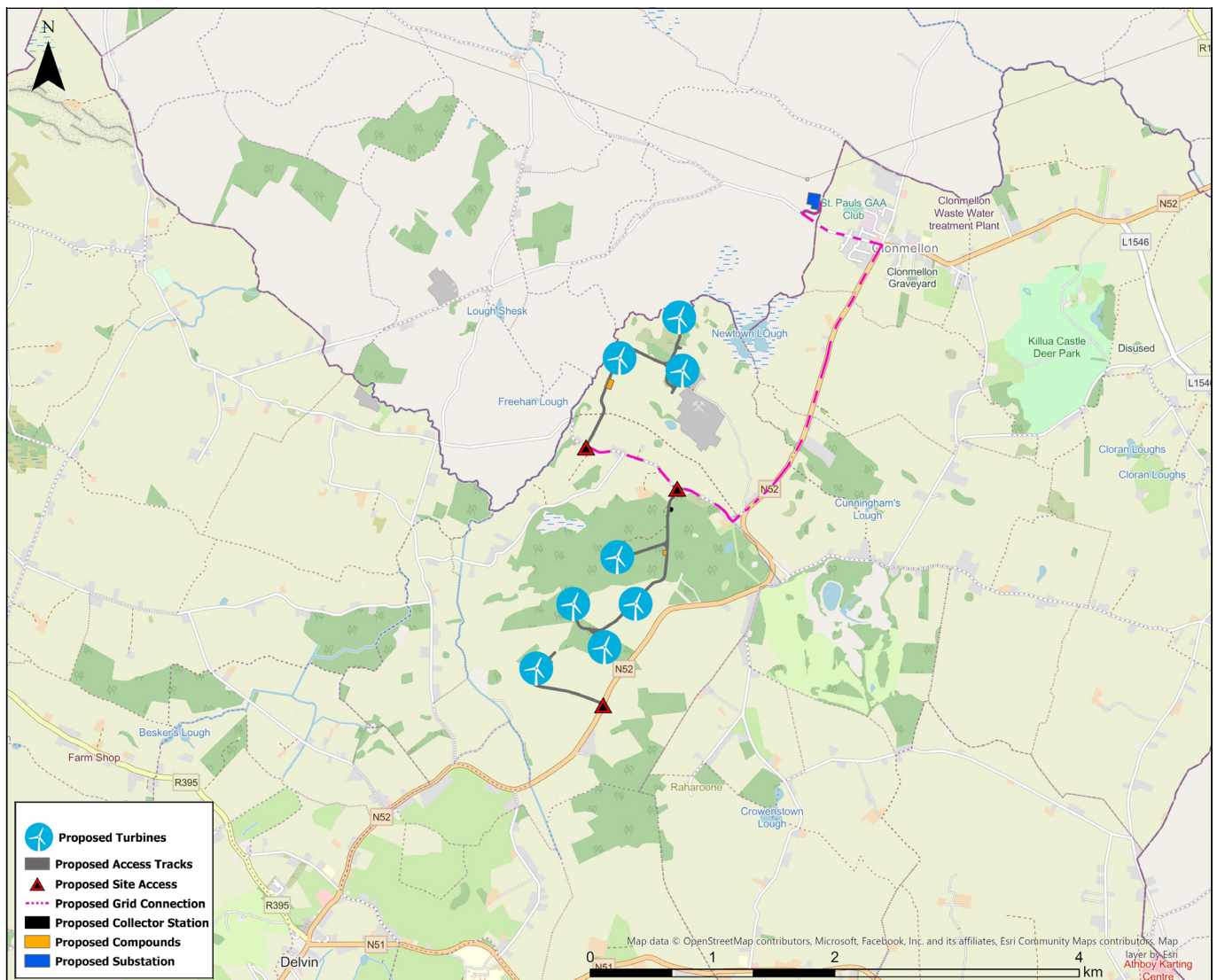
We would like to thank you for taking the time to share feedback and speak with our Community Engagement Team over the past number of months. We have endeavoured to meet with as many members of the community as possible.

We also created a dedicated Knockanarragh Virtual Consultation Room which provided more information including the Environmental Impact assessment process along with the benefits to the local community that the project could provide under the current RESS guidelines. The VCR has also given the community the opportunity to share their thoughts and feedback.

Consultation is ongoing and the Community Liaison team can be contacted on the contact details provided, should you have any further queries.

■ This proposal at a glance

- **8-turbine project**
- **Height of turbine up to a maximum of 180m**
- **Project will displace c. 66,000 tonnes of CO2 annually or approx. 1 million tonnes over a 15 year period**
- **Over 50MW of renewable energy to the Irish electricity grid**
- **Distance to nearest turbine – over 700m**
- **Zero shadow flicker policy**
- **Annual Community Benefit Fund of circa €300,000**
- **Associated works will include access tracks, turbine foundations and hard standing areas, drainage works, temporary site compounds, substation, underground electrical and communications cables between turbines, and an underground cable to connect the proposed project to the proposed substation**





■ Strategic Infrastructure Development

As this proposal has a wind energy output of over 50MW, a direct submission to An Bord Pleanála as a Strategic Infrastructure Development (SID) application is a requirement. Both Westmeath and Meath County Council will be expected to review and actively input on any submission. As required, we will also submit an Environmental Impact Assessment Report (EIAR) with this application.

SID is a development which is of strategic economic or social importance to Ireland, the region or local areas.

■ Next steps

Planning permission for the Knockanarragh Wind Farm will be submitted in the coming weeks directly to An Bord Pleanála. Should planning permission be granted for this project, next steps will be published on the dedicated Knockanarragh website and our Community Liaison Team will also endeavour to engage directly with residents locally.

■ Contact us

You can continue to access the dedicated Knockanarragh Virtual Consultation room at www.knockanarraghwindfarm.ie, where all information and updates relevant to the Knockanarragh Wind Farm project will be posted.

The Community Liaison Team has years of experience in both wind energy and working with communities. While the team members are very knowledgeable about renewable energy projects, they also appreciate the fact that individuals and communities have different thoughts on what works in their respective areas. The team is available to provide information on this proposal or indeed the wider issues of climate action. We would encourage anyone who has an interest in this proposal to get in touch with us using the contact details below.

■ Privacy policy

Here at Statkraft we take your privacy seriously and we treat your information with respect. To facilitate environmental safety management systems and to ensure appropriate assessment and development; consultation and domiciliary data within the study area is collected. For more information about how Statkraft processes personal data, please consult our general privacy policy at:

<https://www.statkraft.ie/privacy-statement/> – or you can also direct any specific questions you have to: privacy@statkraft.com

Contact us

Knockanarragh Community Liaison Team

Phone: +353 579 379 032

Email: enquiries@knockanarraghwindfarm.ie

Please visit www.knockanarraghwindfarm.ie for regular updates or scan the QR code here:

